

**Engine** Yanmar 4TNV98 - ZPYW  
**Gross Power** 50.2 kW (67 hp) @ 2,400 rpm  
**Net Power** 47.8 kW (65 hp) @ 2,400 rpm  
**Operating Weight** 5,600 kg  
**Standard Bucket Size** 0.8 m<sup>3</sup>  
**Standard Breakout Force** 46 kN  
**Standard Dump Clearance** 2,283 mm

# 816G WHEEL LOADER

 **LIUGONG**



TOUGH WORLD. TOUGH EQUIPMENT.

# 816G SPECIFICATIONS >>>

## ENGINE

Emission Regulation	Tier 3 / Stage IIIA
Make	Yanmar
Model	4TNV98 - ZPYW
Gross Power	50.2 kW (67 hp) @ 2,400 rpm
Net Power	47.8 kW (65 hp) @ 2,400 rpm
Peak Torque	238 N • m @ 1,600 rpm
Torque Rise %	20 %
Number of Cylinders	4
Aspiration	natural

## TRANSMISSION

Transmission Type	Counter shaft-type power shift
Torque Converter	3 element - single stage, single phase
Maximum Travel Speed, fwd	25 km/h
Maximum Travel Speed, rev	25 km/h
Number of Speeds, fwd	2
Number of Speeds, rev	2

## AXLES

Differential Front Type	conventional
Differential Rear Type	conventional
Axle Oscillation	11°

## STEERING

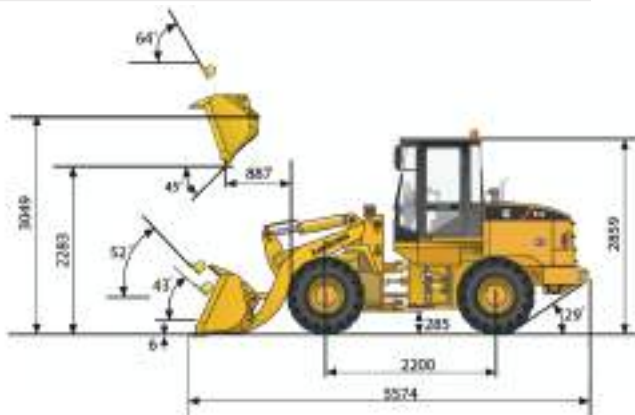
Steering Configuration	articulated
Steering Relief Pressure	14.8 Mpa

## BRAKES

Service Brake Type	caliper dry disc
Service Brake Actuation	hydraulic
Parking Brake Type	shoe / drum
Parking Brake Actuation	mechanical

## HYDRAULIC SYSTEM

Main Pump Type	gear
Main Relief Pressure	18 MPa
Raise	4.4 s
Dump Time	1.2 s
Float Down Time	3 s
Fastest Total Cycle Time	8.6 s



## LOADER ARM PERFORMANCE

Tipping Load - Straight	4,895 kg
Tipping Load - Full Turn	4,180 kg
Bucket Breakout Force	46 kN
Maximum Dump Angle at Full Height	45±1 °
Dump Clearance at Full Height Discharge	2,283 mm
Dump Reach at Full Height Discharge	887 mm
Maximum Hinge Pin Height	3,049 mm
Maximum Digging Depth, Bucket Level	6 mm
Bucket Rollback at Ground Level	43 °
Bucket Rollback at Carry	52 °
Bucket Rollback at Maximum Height	64 °

## BUCKET PERFORMANCE

Reference Bucket	0.8 m <sup>3</sup>
------------------	--------------------

## DIMENSIONS

Length with Bucket Down	5,574 mm
Width Over Tires	1,940 mm
Wheelbase	2,200 mm
Wheel Tread	1,520 mm
Ground Clearance	285 mm
Turn Angle, Either Side	38 °
Rear Angle of Departure	29 °
Turning Radius, Outside of Tire	4,208 mm
Turning Radius, Center of Tire	3,980 mm
Turning Radius, Bucket Carry	4,585 mm

## TIRES

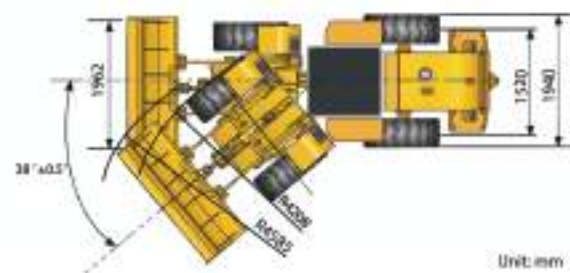
Tire Size	16 / 70 - 20
-----------	--------------

## OPERATING WEIGHTS

Operating Weight	5,600 kg
------------------	----------

## SERVICE CAPACITY

Fuel Tank	95 L
Engine Oil	10.2 L
Cooling System	14 L
Hydraulic Reservoir	72 L
Transmission and Torque Converter	20 L
Axles, each	9 L



Unit: mm

## Guangxi Liugong Machinery Co., Ltd.

No. 1 Liutai Road, Liuzhou, Guangxi 545007, PR China  
T: +86 772 3886124 E: overseas@liugong.com  
www.liugong.com

Specifications and designs are subject to change without notice. Machines shown may include optional equipment.

05/2014 Designed by LiuGong